





## How to get involved

We are holding a seven-week public consultation on the St Cuthbert's Local Plan between Monday 17 March and Tuesday 6 May 2025. We are inviting residents, businesses and other stakeholders to tell us what you think about our draft Local Plan.

The Local Plan, an easy-to-use on-line questionnaire and our FAQs can be found by following this link <https://www.stcuthbertsgv.co.uk/LOCAL-PLAN>

Alternatively you can:

-  Email your comments using the questionnaire to [stcuthbertsgv@cumberland.gov.uk](mailto:stcuthbertsgv@cumberland.gov.uk)
-  Send your comments by post. Please complete and print out the questionnaire form available on the website and send to the Local Plans Development Team, Cumberland Council, Civic Centre, Carlisle, CA3 8QG.

Paper copies of the Plan will be available to view at the Civic Centre Customer Contact Centre, and Carlisle Library, during normal opening hours.

## What happens next?

All the comments received as part of this consultation will be considered by an independent Local Plan Inspector. The Inspector will carry out a review of the plan together with all the comments received through consultation to determine whether the plan is 'sound'. This is called an Examination in Public.

If you are not already on our mailing list please sign up at [www.consult.cumberland.gov.uk](http://www.consult.cumberland.gov.uk)

Photos courtesy of Stuart Walker Photography



## What is St Cuthbert's Local Plan?






The St Cuthbert's Local Plan can be found here <https://www.stcuthbertsgv.co.uk/LOCAL-PLAN>

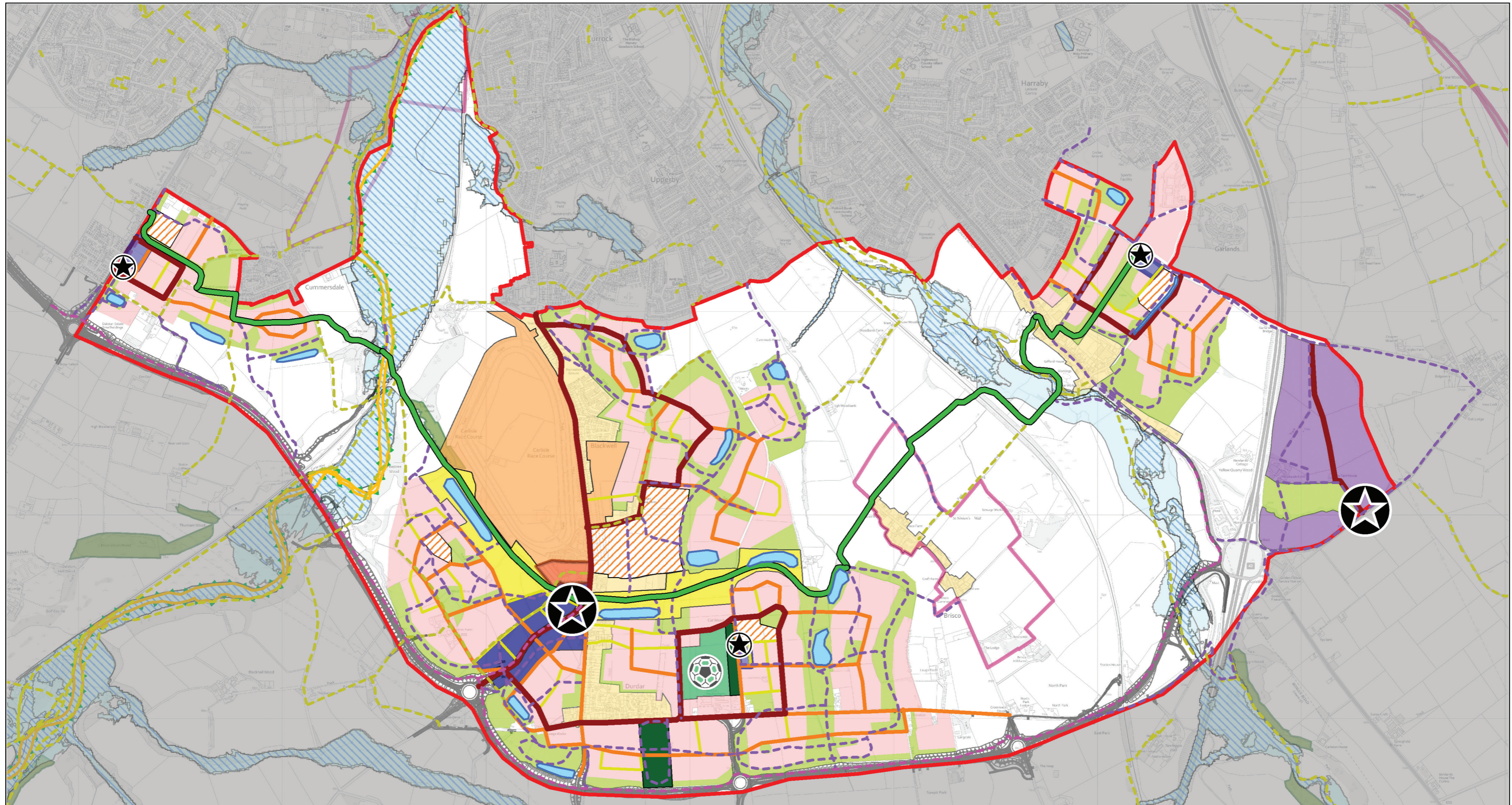
The Plan sets out how St Cuthbert's Garden Village will grow over the next 30 years. It will be used to help us make decisions on planning applications for all types of development and to make sure that new development meets the high design standards expected.




The Local Plan Policies Map (overleaf) identifies where different land uses should go, including houses, schools, infrastructure, local centres and green spaces. It also shows areas where there will be no new development.

The Local Plan sets out a range of planning policies including:

-  Strategic policies to ensure a coordinated and comprehensive approach to development.
-  Neighbourhood policies setting out the types of development and supporting infrastructure required in each area.
-  Development management policies dealing with very specific types of development.





- |  |   |   |  |  |  |
|--|---|---|--|--|--|
|  <b>St Cuthbert's Boundary</b>                                       |  <b>District Centre</b><br><i>Policy N5</i>                  |  <b>Public Rights of Way</b><br><i>Policy SP9</i>      |  <b>Racecourse Policy</b><br><i>Policy N1</i>               |  <b>Conservation Area</b><br><i>Policy DM16</i> |  <b>Special Area of Conservation (SAC)</b><br><i>Policy DM12</i>  |
|  <b>Residential Allocation</b><br><i>Policies N1-N7</i>              |  <b>Local Centre</b><br><i>Policies N2, N3 &amp; N7</i>      |  <b>CSLR Shared Path</b><br><i>Policy SP9</i>          |  <b>Potential Racecourse Expansion</b><br><i>Policy N1</i>  |  <b>Ancient Woodland</b><br><i>Policy DM12</i>  |  <b>Site of Special Scientific Interest</b><br><i>Policy DM12</i> |
|  <b>Strategic Green Infrastructure</b><br><i>Policies SP7, N1-N7</i> |  <b>Strategic Employment Allocation</b><br><i>Policy SP2</i> |  <b>Primary Streets</b><br><i>Policies SP9, SP10</i>   |  <b>Regional SuDs Feature</b><br><i>Policies SP7, N1-N7</i> |  <b>Existing Woodland</b><br><i>Policy DM12</i> |  |
|  <b>Durdar Country Park</b><br><i>Policy SP6</i>                     |  <b>Playing Pitches</b><br><i>Policy N6</i>                  |  <b>Secondary Streets</b><br><i>Policies SP9, SP10</i> |  <b>Flood Zone 2</b><br><i>Policy SP14</i>                  |  |  |
|  <b>School</b><br><i>Policies N1-N7</i>                              |  <b>St Cuthbert's Green Way</b><br><i>Policy SP6</i>         |  <b>Tertiary Streets</b><br><i>Policies SP9, SP10</i>  |  <b>Flood Zone 3</b><br><i>Policy SP14</i>                  |  |  |
|  |  <b>New Active Travel Routes</b><br><i>Policy SP9</i>        |  <b>Principal Mobility Hub</b><br><i>Policy SP9</i>    |  <b>Primary Residential Area</b><br><i>Policy DM10</i>      |  |  |
|  |   |  <b>Core Mobility Hub</b><br><i>Policy SP9</i>         |  |  |  |

**St Cuthbert's Garden Village Policies Map**

March 2025

